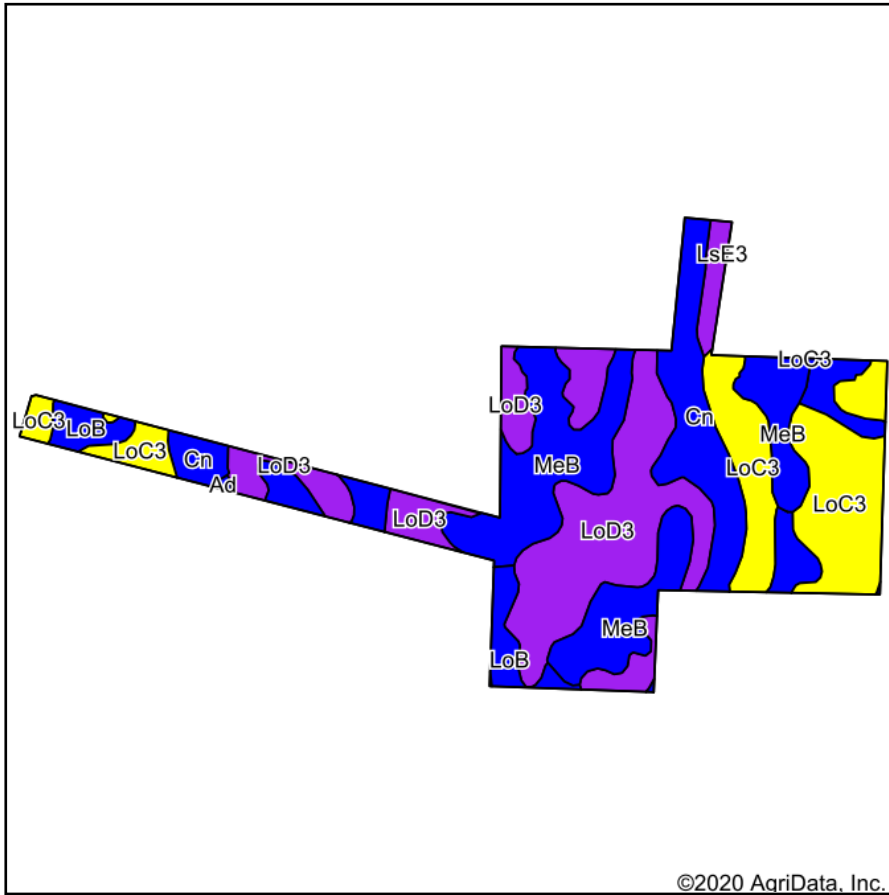
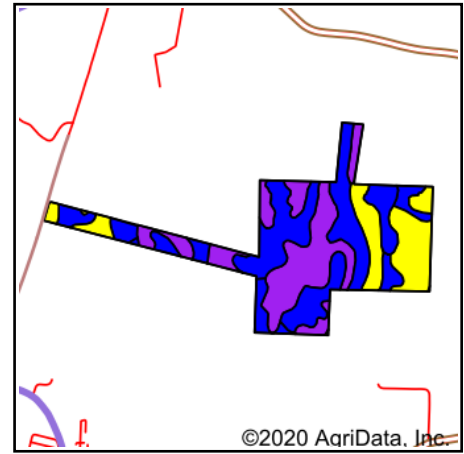


# Soils Map



Soils data provided by USDA and NRCS.



State: **Kentucky**  
 County: **Carlisle**  
 Location: **36° 52' 23.11, -88° 59' 20.19**  
 Township: **Bardwell**  
 Acres: **132.18**  
 Date: **8/13/2020**

Maps Provided By:  
  
 CUSTOMIZED ONLINE MAPPING  
 © AgriData, Inc. 2020 [www.AgriDataInc.com](http://www.AgriDataInc.com)



Area Symbol: KY611. Soil Area Version: 16											
Code	Soil Description	Acres	Percent of field	Non-Irr Class Legend	Non-Irr Class *c	Alfalfa hay	Corn	Grass legume hay	Pasture	Soybeans	Winter wheat
LoD3	Loring silt loam, 12 to 20 percent slopes, severely eroded	38.92	29.4%		Vle			3.3	6.3		
MeB	Memphis silt loam, 2 to 6 percent slopes	31.78	24.0%		Ile	5.5	166	5	8.6	59	71
LoC3	Loring silt loam, 6 to 12 percent slopes, severely eroded	28.25	21.4%		IVe		105	3.5	6.3	39	41
Cn	Convent-Adler silt loams, frequently flooded	15.82	12.0%		IIw		149	5	9	59	
LoB	Loring silt loam, 2 to 6 percent slopes	14.79	11.2%		Ile	5.5	149	5	8.1	52	64
LsE3	Loring-Memphis-Saffell complex, 12 to 30 percent slopes, severely eroded	2.44	1.8%		VIIe				4.5		
Ad	Adler silt loam, frequently flooded	0.18	0.1%		IIw		149	5	9	59	
<b>Weighted Average</b>						<b>1.9</b>	<b>97.1</b>	<b>4.1</b>	<b>7.3</b>	<b>35.5</b>	<b>33</b>

\*c: Using Capabilities Class Dominant Condition Aggregation Method  
 Soils data provided by USDA and NRCS.