

# ABSOLUTE REAL ESTATE AUCTION

SATURDAY, JANUARY 29TH, 2022 @ 10:00 AM



**318 Barringer Rd., Cunningham, KY 42035**

Home & Farm of Mary  
and the Late Al Wise



**EXCELLENT  
BUILDING SITES!**

**2 HOMES ON**

- KOMATSU MACHINERY
- JOHN DEERE GATOR

**60±**

**IN 9 TRACTS  
& COMBINATIONS**

**ACRES**

[harrisauctions.com](http://harrisauctions.com)

Located Near:  
**CUNNINGHAM, LOWES  
& FANCY FARM, KY**

Office: (270) 247-3253



Toll Free: 1-800-380-4318

# MACHINERY - EQUIPMENT - SHOP ITEMS - FURNITURE

Saturday, January 29th, 2022 @ 10:00 am • 318 Barringer Rd., Cunningham, KY 42035



**MACHINERY:** Komatsu PC 200 LC Track Hoe With Thumb: Mode Number- PC200LC-7, S/N Number- 202110, HRS- 9874, 6' Bucket, 3'5" Bucket, 24" Bucket, Komatsu D 85 A Dozer With Ripper And 4 Way Blade: Model # D85-12, S/N # 20882, HRS- Unknown, Ripper- ATECO 3 Shank, Model # PRFD85A, S/N #25651, Gallon T500M Grader: Model #T500M, S/N #GC-08760, HRS- 1307, Terex- TS14 Scraper: Model #61SH, S/N #18956, HRS- 9622, Rogers Low Boy: Year Model- 1981, Capacity- 35 Tons, S/N #19714, Detachable Hydraulic Neck With Self Contained Hydraulic System, Honda 13 HP Gas Motor, Steel Hyd. Ramps On Rear, 1988 Mack

Ecgonidine 9 Speed: Mileage- 691,639, Engine HRS- 6,169, Komatsu Dozer D65E For Parts (Model #D65E-8, S/N #45865), Ditchwitch 5010 Diesel (Trencher, Blade And Hoe All In One, Model #50200, S/N # 6D0319, Hours: Unknown)  
**SEMI - DUMP - PICKUP TRUCKS:** 2009 Ford F250 Quad Cab With 126,373 Miles, VIN 1FTSX21539EA21998, International Dump Truck (15' Steel Dump Bed, Dual Tandem Axles Plus Tag Axle), Ford F-800 Truck With Tanker Bed For Parts, Ford 800 Truck Chassis And Cab  
**TRACTOR:** 5000 Ford Tractor Diesel 2,283 Hours, Model E2014C #C466097, 2WD  
**JOHN DEERE GATOR:** 2018

John Deere Gator Full Size With 832 Hours, Power Pump, XUV825M54 (Model #260947, S/N #IM0825MBPJ011399)  
**TRAILER:** Pintle Hitch Trailer With Dual Tandem Axles (16' Flat, 2.5' Dovetail)  
**BOAT:** Arkansas Traveler Aluminum Boat With Trailer (S/N #31026)  
**MOWERS:** Gravely 290 Zero Turn Mower (Model #992068, S/N #000112), Swisher Country Cut 44" E-Start Pull Type Mower (Model #14544BS, S/N #L119-205014), Troy-Bilt Mustang Colt ZT Zero Turn Mower (Model #17AF2ACP011249880, S/N #1A238690134)

**EQUIPMENT/SHOP ITEMS:** 3PT Bush Hog og 808080880" Tiller (Model #RTN80, S/N #12-10794), 3pt. 6' Box Blade, Cub Cadet 149 Hydrostatic (S/N #2050047V484627), Delta Consolidated L-Fuel Tank (Model #480000, S/N #179286, Capacity- 105 Gallons), Ingersoll-Rand Sand Blaster (Model #GR-85, S/N #85MR11074), JE-CO 500 Pound 3pt PTO Spreader, Acetylene Torches, Torch Leads, Toro Saw, Hobart Mig Welder Handler 140, Band Saw, Hydraulic Press, Huskee 650 Series Hydraulic Wood Splitter 5 Hp Engine, Hobart Champion 10,000 W Generator, Stihl Tiller, Pressure Washer, Engine Lift, " & 3/4" Three-Quarter Inch Socket Set, Pipe Wrenches, 1" Open The End Wrenches, True Craft Torque Wrench, 10 Ton Porta Puller, Craftsman Stack Toolbox, Wrenches, Sockets Wheel Puller'S, Screwdrivers, Vice Grips, Air Tools, Battery Operated Grease Gun, Dremel, Fence Post Remover, Laser Plane Spectra Physics, Spectra Physics Grade Plane Model RD2S-L Series 3343, Lincoln 225 Welder, Briggs & Stratton Generator 6000 W, Drill Press, Electric Leaf Blower, Dewalt 7/9 Inch Angle Grinder, Dewalt 4 Inch Angle Grinder, Dewalt Electric Drill, Battery Chargers, Portable Air Tanks, C Clamps, Multiple Hand Tools

**APPLIANCES:** Industrial Oven, 5 Burner Electrolux Gas Stove, Dishwasher, Frigidaire Upright Freezer, LG Large French Door Refrigerator Freezer, 2

Refrigerators, 5 Burner Samsung Gas Stove

**FURNITURE:** Leather Couch, Wood Coffee Table, Leather Rocker Recliner, Like New Electric Recliner, Bar Stools, Oak End Table, Oak China Cabinet, Book Case, Leather Chair, Childs Wood Chair, Electric Heater, Tan Cloth Hide A Bed Couch, Tan Overstuffed Chair And Ottoman, Entry Table, Oak Dresser With Mirror, Oak Lamp Table, Oak Chest Of Drawers, Maytag Washing Machine, Maytag Dryer (Recently Purchased), Bakers Rack, Wood Rocker, Oak Side Table, Sharp Tv, Oak Tv Table, Plaid Couch Hide A Bed,

Day Bed, Metal Twin Bed, Computer Desk, Office Chair, Sears Kenmore Sewing Machine, Queen Wood Bed With Drawer Storage, Oak Wash Stand, Metal Day Bed, Baby Changing Chest, Oak Display Cabinet, Metal Chairs And Table, Outdoor Composite Rocking Chairs And Swing, Leather Straight Back Chairs, Dark Leather Couch, 4 Kitchen Chairs, Stainless Steel Table On Wheels, Serving Table With Wine Rack, Metal Twin Bed, Metal Chairs, Stainless Bakers Rack

**GLASSWARE & ANTIQUES:** Cranberry Glassware, Cake Stand, Tea Set, Cups And Saucers, Lamps, Oil Lamp, Crystal Stem Ware, Hand Painted Tea Pots, Mayfield KY Tobacco Basket, Phillips 66 Sign

**KITCHENWARE:** Breville Toaster Air Fryer, Baking Pans, Johnson Bros 10 Place Setting Includes Plates, Serving Bowls, Salad Bowls, Soup Bowls, Tea Pot, Gravy Bowl, Teacups And Saucers, Utensils, Butterball Electric Turkey Fryer



[www.harrisauctions.com](http://www.harrisauctions.com)  
**MACHINERY OFFERED ONLINE!**

**PERSONAL PROPERTY TERMS:** A 10% buyer's premium will be added to the final bid and included in the sales price. Full settlement date of sale. Check or cash only.  
**270-247-3253 • 800-380-4318**

# 2 HOMES on 60+ ACRES

SATURDAY, JANUARY 29TH, 2022 @ 10:00 AM • 318 BARRINGER RD., CUNNINGHAM, KY 42035



**Home & Farm of Mary and the Late Al Wise**

**ABOUT THE REAL ESTATE ON TRACT 1:**

3 Bedroom 2.5 Bath home & Shop on 1.63 Acres. This unique vinyl sided home has a spacious family room with kitchenette, vaulted ceilings, and wood burning fireplace with brick hearth. The master bedroom is on main level with ensuite. The kitchen, sunroom, laundry room, and mud room are also located on the main level. There are 2 bedrooms, walk-in closet, and half bath located upstairs. - 1.63 Acres

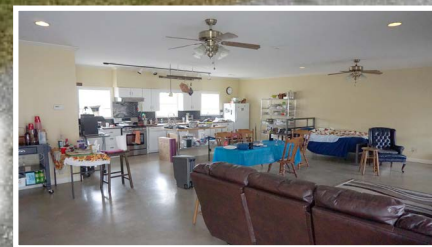


**SHOP ON TRACT 1**

**AUCTION HELD ON SITE!**



**INSIDE OF SHOP HOUSE WITH OPEN FLOOR PLAN ON TRACT 2**



60±

IN 9 TRACTS  
& COMBINATIONS  
ACRES

**Real Estate Tracts**

<b>Tract 1:</b>	3 Bedroom 2.5 Bath home & Shop on 1.63 Acres.
<b>Tract 2:</b>	Shop House with open floor plan & Pond on 2.72 Acres
<b>Tract 3:</b>	2 Ponds on 21.18 Acres
<b>Tract 4:</b>	9.58 Acres
<b>Tract 5:</b>	5.85 Acres
<b>Tract 6:</b>	5.81 Acres
<b>Tract 7:</b>	4.10 Acres
<b>Tract 8:</b>	5.63 Acres
<b>Tract 9:</b>	3.86 Acres

**270-247-3253 • 800-380-4318**



**Excellent Building Sites!**  
[www.harrisauctions.com](http://www.harrisauctions.com)



**TERMS AND CONDITIONS -**  
**PROCEDURE:** The property will be offered in multiple tracts.  
**BUYERS PREMIUM:** A 10% Buyer's Premium will be added to the final bid and included in the deed transaction sale price.  
**DOWN PAYMENT:** 15% as down payment on the day of the auction with balance in cash at closing on or before 30 days. The down payment may be in the form of cashier's check, personal check, or corporate check. **YOUR BIDDING IS NOT CONDITIONAL UPON FINANCING, SO BE SURE YOU HAVE**

ARRANGED FINANCING, IF NEEDED, AND ARE CAPABLE OF PAYING CASH AT CLOSING.  
**CLOSING:** Closing shall take place on or before 30 days from auction date.  
**REAL ESTATE TAXES:** All 2022 ad valorem taxes will be prorated at closing.  
**SURVEY:** The property will be sold by a new survey to be split between seller & buyer.  
**DISCLAIMER AND ABSENCE OF WARRANTIES:** All information contained in this brochure and all related materials is subject to the Terms and Conditions outlined in the Purchase Agreement. **ANNOUNCEMENTS MADE BY THE AUCTION COMPANY AT THE AUCTION PODIUM DURING THE TIME OF THE SALE WILL TAKE PRECEDENCE OVER ANY PREVIOUSLY PRINTED MATERIAL, OR ANY OTHER ORAL STATEMENTS MADE.** The property is being sold on an "AS IS, WHERE IS" basis, and no warranty or representation, either express or implied, concerning the property is made by the Seller or Auction Company. Each potential bidder is responsible for conducting his or her own independent inspections, inquiries, and due diligence concerning the property. The information contained in this brochure is believed to be accurate but is subject to verification by all parties relying on it. No liability for its accuracy, errors, or omissions is assumed by the Seller or the Auction Company. All sketches and dimensions in this brochure are approximate. Except for any express warranties set forth in the sale documents, purchaser(s) assumes all risks thereof and acknowledges that in consideration of the other provisions contained in the sale documents, Seller and the Auction Company make no warranty or representation, express or implied or arising by operation of law, including a warranty of merchantability or fitness for a particular purpose of the property, or any part thereof, and in no event shall Seller or the Auction Company be liable for any consequential damages. Conduct of the auction and increments of bidding are at the direction and discretion of the auctioneer. The Seller and Auction Company reserve the right to preclude any person from bidding if there is any question as to the person's credentials, fitness, etc. All decisions of the auctioneer are final.  
**NEW DATA, CORRECTIONS, AND CHANGES:** Please arrive prior to scheduled auction time to inspect any changes, corrections or additions to the property information.  
**PERSONAL PROPERTY TERMS:** A 10% buyer's premium will be added to the final bid and included in the sale price. Settlement due day of sale.