

LAND Auction

THURSDAY JUNE 23 @ 6 PM (CST)

9300 OLD SMYRNA ROAD



LIVE & ONLINE



**GREAT
LOCATION
IN MIDDLE
TENNESSEE!**

**BRENTWOOD
TENNESSEE**

DEVELOPABLE PROPERTY WITH SEWER CONNECTING TO THE PROPERTY. POTENTIAL FOR MULTIPLE HOMES, THERE ARE **4 PRELIMINARY PERC SITES**, EACH THAT COULD SUPPORT A 4-5 BR HOME ON EACH

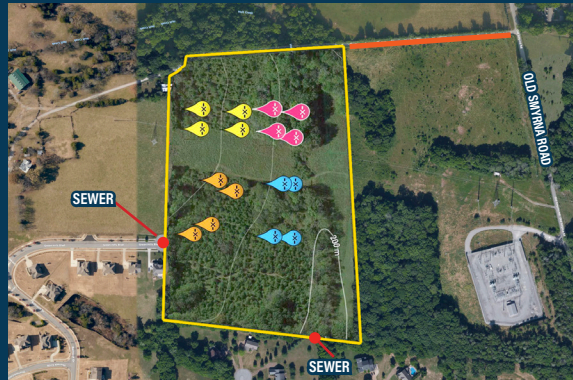
**23.8
ACRES**
in the heart of
**Brentwood
TN**



**REAL ESTATE IS OFFERED AT 6:00 PM!
AUCTION HELD AT EAST BRENTWOOD
PRESBYTERIAN CHURCH & ONLINE!**

ABOUT THE REAL ESTATE: Harris Real Estate and Auction will be conducting a **Land Auction on Thursday, June 23rd at 6pm**. At auction will be 23.8 acres in the heart of Brentwood TN. This incredible property adjoins two neighborhoods with sewer access for future development. If you're looking for large acreage to build your own custom estate home with **potential for multiple homes**, there are **4 preliminary perc sites, each that could support a 4-5 BR home on each**. The property is minutes from major shopping, interstate access and near Brentwood's most exclusive newest communities.

DIRECTIONS: From Wilson Pike, turn east on Old Smyrna Road, continue past the new community Harlan, property is on the right. Using a GPS - 9318 Old Smyrna Road.



IN PARTNERSHIP
WITH:



KW

KELLERWILLIAMS

Debra Weckesser

Broker/REALTOR

(615) 405-3913



AUCTION HELD:

**East Brentwood Presbyterian Church
9000 Concord Rd. Brentwood, TN**

REAL ESTATE TERMS: 10% Deposit Down Day Of Sale Balance In 30 Days. A 10% Buyer's Premium Will Be Added To The Final Bid & Included In The Contract Price. Make Inspections Prior To Date Of Sale.



MICHAEL HARRIS

PRINCIPAL BROKER

PRINCIPAL AUCTIONEER

TL# 5624 | TN Broker# 280718

KL# 252972 | KY Broker# 198374

Your Professional Auctioneers



NICK SHUFORD

TN BROKER / PARTNER

AFFILIATE AUCTIONEER

TN Broker for the Shuford Group

TL# 7240 / LIC# 315937

HOMES / ESTATES / FARMLAND / WATERFRONT

SERVING NASHVILLE & ALL OF MIDDLE TENNESSEE

615-674-0535 | 800-380-4318

www.harrisauctions.com