

ABSOLUTE REAL ESTATE AUCTION

SATURDAY, APRIL 22, 2023 @ 10 AM

Estate of RICKIE CLARK

2875 STATE ROUTE 131, MAYFIELD, KY 42066



SELLING 2 PROPERTIES

3 BDRM
VINYL SIDED
HOME
2.48 ACRES IN
2
TRACTS
& COMBINATIONS

PUBLIC PREVIEW DATE:
MONDAY, APRIL 17TH - 4-5 PM

75 Acres

IN 3 TRACTS
& COMBINATIONS
on Dave Miller Rd.
Mayfield, KY

HUNTING
RECREATIONAL
BUILDING SITES!
CRUISE THE TIMBER!

ALSO SELLING:

- VEHICLES
- TRAILERS
- TRACTORS
- IMPLEMENTS
- LAWN MOWERS
- TOOLS
- FURNITURE
- HOUSEHOLDS

Both Properties Will Sell At:
2875 STATE ROUTE 131
MAYFIELD, KY 42066

HARRIS
Real Estate & Auction

270.247.3253
harrisauctions.com

April 22, 2023 | PERSONAL PROPERTY | The Estate of Rickie Clark

VEHICLES-TRAILERS-TRACTORS-IMPLEMENTS-LAWN MOWERS-TOOLS-FURNITURE-HOUSEHOLDS



VEHICLES: GMC 7000 Burgundy Dump Truck Vin# 1GTM7D1B5CV566599 - 28,996.2 Miles, Mercedes SUV ML 430 - Vin# 4JGAB72E3YA169091 - Miles Unknown, Old Chevy Truck Frames & Motor, 89' Ford F150 XLT Lariat Extended Cab - 4 WD - 161,101 Miles - Vin# 1FTEX14H6KKA88874, 30933 Serial # - 1952 GMC Panel Truck - 123,326 Miles, 1984 Chevy Red Corvette - Coupe 2-Dr - RWD - Vin# 1G1AY0783E5102081 - 125,712 Miles, StarCraft Boat on Shoreline - Tandem Trailer - Stra54630276-F6, 2006 Harley Davidson FXSTI Motorcycle-Vin#1HD1BVB176Y029506 - 89,825 Miles

Compressor 1979, Firestone & Alcoa Semi Steer Tire, Speedway 14" Cutoff Chop Saw, ALC Sandy Jet Abrasive Blaster - Model F90 5 Gallon Hydraulic Oil Pump, 15" Aluminum Wheels, Delco Cleaning Systems Washer, Earthquake Log Splitter, Ratchet Straps, De-Icer (2 Boxes), Shop Fan, Wooden Coke Crate, Seeder, Electric Motors, Electrical Boxes, 30amp Power Cord, Chicago Pneumatic CP797 Impact, Tools / Wrenches / Sockets / Hammers / Drill / Etc., Tool Boxes, Speedway Series Parts Washers, Old 2 Man Cutting Saw, Hand Saws, Grease Guns, 225 hp Shop Vac, Jacks, Engine Hoist, Ready Heater, Shop Lights, Ladders, Gas Cans, Barbecue Grill / Smokers / Charcoal, Propane Mr. Heater, Dewalt/Hitachi Grinders, Stahl MS 170 Chainsaw, Welding Helmet, Electric Heaters, Hyper Touch 1 Gallon Wet-Dry Shop Vac (New), Harley Davidson Helmet, Welding Helmet, Predator 2000 Generator, Mac Tools Box.



TRAILERS: Utility Trailer 5'x10', Steel Utility Trailer 6'x9', Triple Axel Utility Trailer 8'x20', Fruehauf Trailer Corp. Semi Dolly - GVWR 20,000 - Vin# 2E00817SE045551 - 10/94, Trotwood Camper Trailer, Pintle Hitch Tandem Wheel Equipment Trailer 8'x25' (Yellow), Forest River Camper MFG 10-6-2005 - Vin# 4X4TWDH206P007050 - 28 Ft., Fruehauf 1967 Semi Log Trailer.

GUNS: Browning Pistol Cal. 6 m/m35, Colt Python 357 Magnum CTG, Colt Police Positive Special 38, 12 GA Sears and Roebuck Model 300, Mossberg 410 Model 183 KC 3", Marlin 22 Rifle, Stevens 12 GA Single Shot, Mossberg 20 GA Bolt Action, 20 GA Sears & Roebuck Model 200.



TRACTORS/BACKHOE: Kubota B7100 4WD - 1165 Hrs. Vin# 7321114812, John Deere 4520 - 8525.3 Hrs. - T813R 008466R, Case Backhoe 480B - Vin# 5269958.

FURNITURE/HOUSEHOLD/MISC.: Wooden Chest, Wood Dining Table, Old Antique Steel Head / Footboards, Universal Freezer / Refrigerator, Dresser / Vanity / Chest of Drawers / Small Table, Butcher Block Table, Kitchen Table & Chairs, Small Table Top & 2 Stools, Cast Iron Skillets, Ceramic Pigs, Cast Iron Clock, Iron Kettle, Pottery Jugs, Cookie Jars, Campbells Soup Coffee Mug Collection, Pioneer CS 9000 Home Stereo Speakers, Bushnell Telescope, Earnhardt Jr. Die Cast Car, Wooden Case w/Bible, Dexter Meat Cutter, 32" TV Flatscreen & RCA Speakers, Bread Box, RayBan Sunglasses, Apeaman C450 Desk Camera, Pictures, Sanyo TV & Stand, Wooden Coke Clock, Steins (5), Mason Jars & Bunch of Glass Jars, DVD's, Leather Saddle Bag, Leather Jacket Size 54, Leather Harley Davidson Chaps Large, Leather Jacket Size Medium



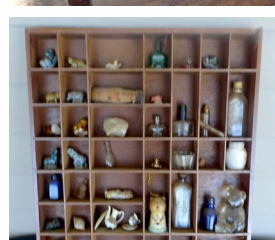
IMPLEMENTS: Truck Mount Crane Boom, Backhoe Bucket - 60", Scoop Bucket - 32", Single Row Plow, Box Blade - ft., Pallet Forks, Rotary Tiller 5 Ft., Befco G50 Rear Tractor Tiller 5 Ft., 6 Ft. Finish Mower, John Deere 1517 Batwing Bushog 15 Ft. W01517E004124, 1 Row Plow, 3 Ft. Disc.

JEWELRY: Rolex Watch Oyster Perpetual (Not Authenticated)



LAWN/GARDEN: Murray Riding Mower 38", Snapper Rear Tine Tiller - 6 hp Briggs & Stratton Motor, John Deere LA 110 Automatic 42", Murray 2 hp / 10" Tiller.

GARAGE/TOOLS/SHOP: Power Tech Generator - 17.5 KW KFZ40DG31115RYL, Everstart Marx Battery Charger - 200 amp / 35 amp / 2 amp, Torch Cart & Torches, Lincoln Arc Welder, Neptune Auto Stop Register (Fuel Pump), Thurman Scale, Observation Steel Stand, Steel Safe, Concrete Blocks, Steel Fuel Tank 500 Gallon, Corvette Wheels / Tires, Semi Tires, 26 Alcoa Wheel, Chains & Booms, Concrete Mixer, Barbecue Grill / Smokers / Charcoal, San Born MFG Air



Both Properties Will Sell At:
2875 STATE ROUTE 131
MAYFIELD, KY 42066



PERSONAL PROPERTY TERMS:
A 10% buyer's premium will be added to the final bid and included in the sales price. Full settlement date of sale. Check or cash only.

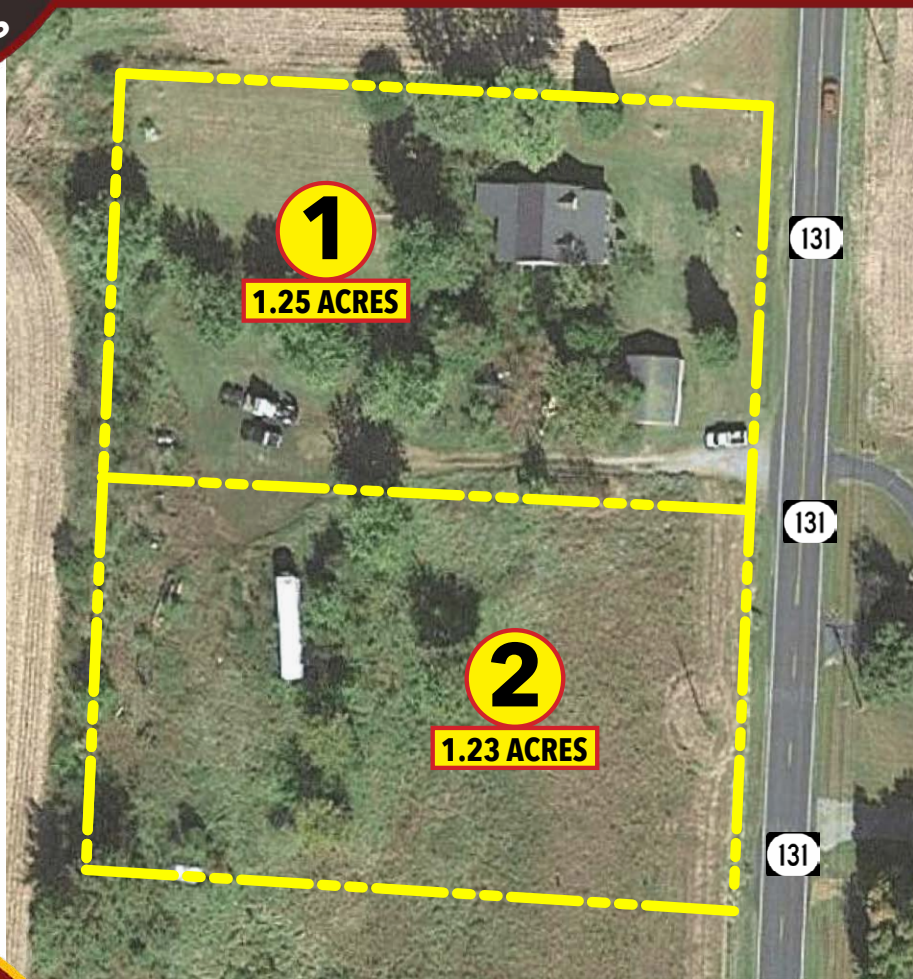
ABSOLUTE REAL ESTATE AUCTION

3 BDR VINYL SIDED HOME & 2.48 ACRES IN 2 TRACTS & COMBINATIONS

SELLING 2 PROPERTIES SATURDAY, APRIL 22, 2023 @ 10 AM



Estate of RICKIE CLARK



TRACT 1 REAL ESTATE DESCRIPTION:

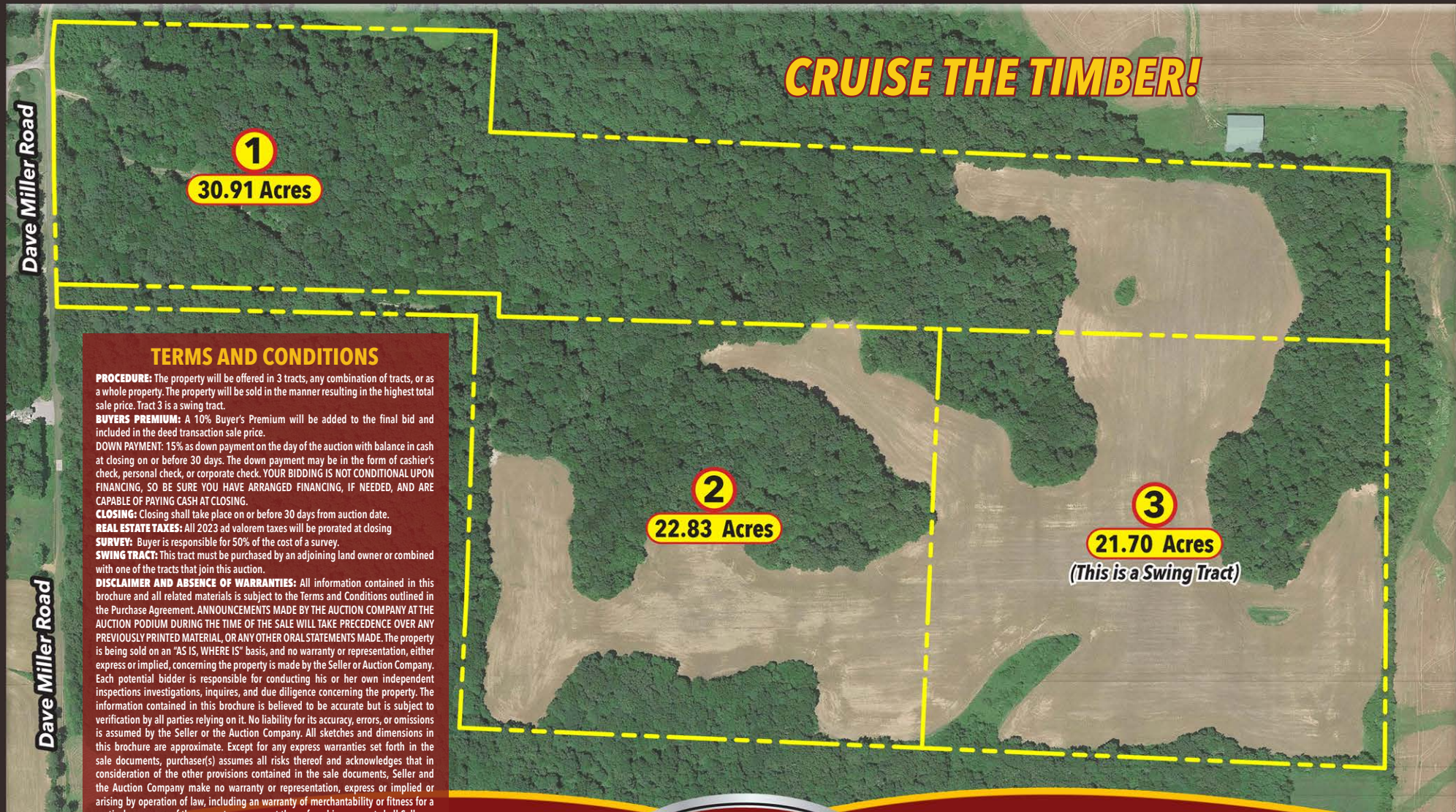
4 Bedroom, 1 Bath, Vinyl sided home with unfinished walkout basement, unlimited possibilities. Exterior features include a covered front porch and a 2-car detached vinyl sided garage all situated on 1.25± acres.

TRACT 2: 1.23± acres

PUBLIC PREVIEW DATE: MONDAY, APRIL 17TH - 4-5 PM

75 Acres
IN 3 TRACTS & COMBINATIONS
on Dave Miller Rd.
Mayfield, KY

Both Properties Will Sell At:
2875 STATE ROUTE 131
MAYFIELD, KY 42066



TERMS AND CONDITIONS

PROCEDURE: The property will be offered in 3 tracts, any combination of tracts, or as a whole property. The property will be sold in the manner resulting in the highest total sale price. Tract 3 is a swing tract.
BUYERS PREMIUM: A 10% Buyer's Premium will be added to the final bid and included in the deed transaction sale price.
DOWN PAYMENT: 15% as down payment on the day of the auction with balance in cash at closing on or before 30 days. The down payment may be in the form of cashier's check, personal check, or corporate check. YOUR BIDDING IS NOT CONDITIONAL UPON FINANCING, SO BE SURE YOU HAVE ARRANGED FINANCING, IF NEEDED, AND ARE CAPABLE OF PAYING CASH AT CLOSING.
CLOSING: Closing shall take place on or before 30 days from auction date.
REAL ESTATE TAXES: All 2023 ad valorem taxes will be prorated at closing.
SURVEY: Buyer is responsible for 50% of the cost of a survey.
SWING TRACT: This tract must be purchased by an adjoining land owner or combined with one of the tracts that join this auction.
DISCLAIMER AND ABSENCE OF WARRANTIES: All information contained in this brochure and all related materials is subject to the Terms and Conditions outlined in the Purchase Agreement. ANNOUNCEMENTS MADE BY THE AUCTION COMPANY AT THE AUCTION PODIUM DURING THE TIME OF THE SALE WILL TAKE PRECEDENCE OVER ANY PREVIOUSLY PRINTED MATERIAL, OR ANY OTHER ORAL STATEMENTS MADE. The property is being sold on an "AS IS, WHERE IS" basis, and no warranty or representation, either express or implied, concerning the property is made by the Seller or Auction Company. Each potential bidder is responsible for conducting his or her own independent inspections investigations, inquires, and due diligence concerning the property. The information contained in this brochure is believed to be accurate but is subject to verification by all parties relying on it. No liability for its accuracy, errors, or omissions is assumed by the Seller or the Auction Company. All sketches and dimensions in this brochure are approximate. Except for any express warranties set forth in the sale documents, purchaser(s) assumes all risks thereof and acknowledges that in consideration of the other provisions contained in the sale documents, Seller and the Auction Company make no warranty or representation, express or implied or arising by operation of law, including a warranty of merchantability or fitness for a particular purpose of the property, or any part thereof, and in no event shall Seller or the Auction Company be liable for any consequential damages. Conduct of the auction and increments of bidding are at the direction and discretion of the auctioneer. The Seller and Auction Company reserve the right to preclude any person from bidding if there is any question as to the person's credentials, fitness, etc. All decisions of the auctioneer are final.
NEW DATA, CORRECTIONS, AND CHANGES: Please arrive prior to scheduled auction time to inspect any changes, corrections, or additions to the property information.



270.247.3253
harrisauctions.com