

Absolute REAL ESTATE AUCTION

Between Dogwood
& Hardmoney

2113 State Route 1684, Boaz, KY 42027

Saturday
May 6th, 2023
@ 10:00 AM

PUBLIC PREVIEW DATE:
Monday, May 1st, 2023 - 4-5 PM

*The Allen L. Boyd
Estate*



**Over 50
Collectible
Case Knives**



ALSO SELLING:

- 2016 SILVERADO TRUCK
- BOAT
- GUNS
- GUN SAFES
- 2021 ENCLOSED TRAILER
- APPLIANCES
- COLLECTIBLES KNIVES
- PORTABLE BUILDINGS
- TOOLS
- FURNITURE
- KITCHENWARE



270.247.3253

FOR MORE
DETAILS GO TO

harrisauctions.com

Absolute REAL ESTATE AUCTION

2113 State Route 1684
Boaz, KY 42027

The Allen L. Boyd Estate

Saturday

May 6th, 2023

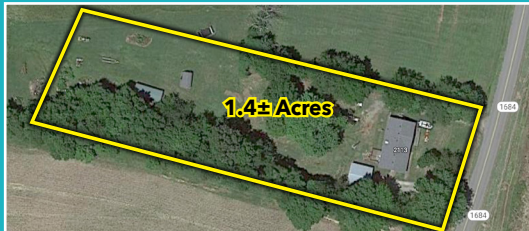
@ 10:00 AM

PUBLIC PREVIEW DATE:

Monday, May 1st, 2023 - 4-5 PM

HARRIS
Real Estate & Auction

AUCTION HELD
ON SITE



VEHICLE: 2016 Chevrolet Silverado 1500 LT CREW- 4 WD- 82,161 Miles- VIN#3GCUKREC8GG260297
GUNS: 38 Smith & Wesson Special CTG, Charter & Arms Corp. Bridgeport, Conn, Underscore .38 Special, Kahr Arms Worcester, MA, CW9 S/N: ED3863, Smith & Wesson .38 S/N: 275851, Smith & Wesson Air Weight 38 SPL CTG, Glock 22 .40 Cal S/N: GGE184, Beretta 12 Gauge 3in Mag 20 in Barrell Model: 1201FP, 300 Weatherby Magnum, Stevens 2 3/4 " 16 Gauge Single Shot
GUN SAFES: Winchester Gun Safe, Liberty Gun Safe-Series #387896, Cannon Gun Safe- Serial #M1195833,
AMMO: Fusion 300 Win Mag 150 Grain, S&W Center Fire Cartridges, Independence Centerfire Pistol Cartridges, Federal Ammunition 300 WSM, 180 Grain Bonded Soft Point, Winchester Western Center Fire Pistol, Revolver Cartridges, Hornady Ammunition 300 WBY Mag 150 Grain Interbond, 38/357 Shotshells, Remington 38 Special Center Fire Cartridges, Federal Centerfire Pistol Cartridges, Cal .38 Special 150 Gr. Lead, Winchester Upland Game Loads
KNIVES: 50 Case Knives: Bone Handle, Stag Handle, Limited Editions, 125 Year Commemorative, Collectors Club
APPLIANCES & ELECTRONICS: Amana Washer & Dryer, RCA Refrigerator, Emerson Flatscreen TV, Kenmore Vacuum, Paper Shredder
KITCHENWARE: Toaster Coffee Maker, GE Toaster, Corning ware, Tupperware, Small Pyrex

bowl, Small Pyrex dish w/ lid, Everyday plates, bowls, cups, flatware, Rival Crockpot, Turkey Roaster, WM Rogers & Sons Plated Flatware 51pc, Hefty plastic trash can, Electric skillet, cut glass pitcher, Blue & White Made in Japan serving bowl, cups, saucers
FURNITURE: Cable Piano & Stool, Leather Couch, Loveseat, Recliner, Floor lamps, Glass Shelf, Glass Top side table, Oak Entertainment center, Computer desk, Bookcases, Barrister Bookcase, 2 drawer metal filing cabinet, 4 drawer metal filing cabinet, Display Cabinet, Winchester Safe- holds up to 24 guns 5' tall, Wardrobe, Queen Bed, Nightstand, 4 Pc Queen Bedroom suite, Plastic shelves, plastic organizer, Marble Top kitchen table
BOAT: Ebbtide 14 Foot boat and trailer w/ Johnson 55 HP motor
ENCLOSED TRAILER: 2021 Black 20 Foot Enclosed Trailer

EQUIPMENT, TRAILERS, SHOP ITEMS: Case 310 Crawler/Loader, Ford 4500 Backhoe w/ bucket, long 4-wheel 3 PH Hay rake, 2 wheel homemade trailer w/ ramps, 2 wheel homemade trailer-frame, Kubota G4200 diesel Mower, 2-Dixon Zero Turn 12 HP 42" Cut Mowers, Mower pull behind trailer, 3 Row Spring Plow, Cattle Gates, Craftsman 17" walk behind tiller, Craftsman 4 cycle trimmer, Champion 3500W Generator, Poulan Pro 16" Chainsaw, ZJ4116 Drill Press, Cub cadet Yard Sweeper, Central Pneumatic 3 & 8 Gallon air compressor, Eagle River 1800 psi pressure washer, Bench vise, Bench grinders, Speedway series 100amp welder, Dewalt Radio, Lawn Mower Jack, Kerosene Heaters, Filing Cabinets, Minn Kota trolling motor, Saw Horses, Whispertone vacuum, Aluminum extension ladder, Ladders, Wheel barrow, Torch cart & bottles, Assortment of chains, Gas Cans,

electric sanders, Floor Jacks, 2 Wheel dollies
PORTABLE BUILDINGS: 16'x10', 12'x32'
OUTDOOR/GARAGE ITEMS: 3-wheel Garden Cart, Chain Link Fencing, Pair of metal ramps, Torch Cart, 2 Boat Seats, Scrap Metal, Wheel Barrow, Aluminum extension ladder 16', Hissense ac unit, Central Pneumatic air compressor, Old Skis, Wood Toy chest, Wood Saw Horses, Garden Planters, Fishing poles, Oil Lanterns & Regular Lanterns, Fishing Nets, Life Jackets, Hedge trimmers, Shovels, rakes, garden hoes
TOOLS & HAND TOOLS: Ratchets & sockets, Hand Saw, Extension Cord, Aluminum Step ladder, wrenches, plyers, screwdrivers, sledge hammers, hammers, Craftsman tool boxes, Craftsman tools/sockets/wrenches, Skill saws, Drills, Levels, Assortment of bolt bins, Grease guns
MISC. HOUSEHOLDS: Leather Briefcase, Alarm Clocks, Marksman Sling Slot, Marksman 3/8 Steel hunting Shot, Nascar Jackets & T-shirts (XL), Kentucky Jacket (XL), Assortment of Elvis records, 3 Pc luggage set, Comfort Furnace infrared heater, Space heaters, Linens, Sheets, Towels, Blankets, Polaroid Cameras & accessories, Adding Machine, Assortment of books, Baskets, 5 "Billy Beers", Costume Jewelry, Home décor including pictures, wall hangings, lamps, candle holders, duffle bags, 3 wood walking canes, Coax Ground Wire, Faucet, KY Wildcats Clock, Seat Massager
MUSICAL INSTRUMENTS: Super Chromatic Harmonica, Fiddle

About the Real Estate

This single family brick home features 3 bedrooms and 2 bathrooms. There is an open concept layout - eat in kitchen, large closets, and a wood burning fireplace. It is located in the Dogwood Community on 1.4 +/- acres. A very nice property located off State Route 1684 in Boaz, Kentucky.

REAL ESTATE TERMS

PROCEDURE: The property will be offered in one (1) tract.
BUYER'S PREMIUM: A 10% Buyer's Premium will be added to the final bid and included in the deed transaction sale price.
DOWN PAYMENT: 15% as down payment on the day of the auction with balance in cash at closing on or before 30 days. The down payment may be in the form of cashier's check, personal check, or corporate check. YOUR BIDDING IS NOT CONDITIONAL UPON FINANCING, SO BE SURE YOU HAVE ARRANGED FINANCING, IF NEEDED, AND ARE CAPABLE OF PAYING CASH AT CLOSING.
CLOSING: Closing shall take place on or before 30 days from auction date.
REAL ESTATE TAXES: All 2023 ad valorem taxes will be prorated at closing.
SURVEY: The property will be sold by current deed.
DISCLAIMER AND ABSENCE OF WARRANTIES: All information contained in this brochure and all related materials is subject to the Terms and Conditions outlined in the Purchase Agreement. ANNOUNCEMENTS MADE BY THE AUCTION COMPANY AT THE AUCTION PODIUM DURING THE TIME OF THE SALE WILL TAKE PRECEDENCE OVER ANY PREVIOUSLY PRINTED MATERIAL, OR ANY OTHER ORAL STATEMENTS MADE. The property is being sold on an "AS IS, WHERE IS" basis, and no warranty or representation, either express or implied, concerning the property is made by the Seller or Auction Company. Each potential bidder is responsible for conducting his or her own independent inspections, investigations, inquiries, and due diligence concerning the property. Buyer will be required to sign a Lead Based Paint Disclosure waiving the opportunity to a 10 Day Post Sale Inspection. Make Inspections Prior To Date Of Sale. The information contained in this brochure is believed to be accurate but is subject to verification by all parties relying on it. No liability for its accuracy, errors, or omissions is assumed by the Seller or the Auction Company. All sketches and dimensions in this brochure are approximate. Except for any express warranties set forth in the sale documents, purchaser(s) assumes all risks thereof and acknowledges that in consideration of the other provisions contained in the sale documents, Seller and the Auction Company make no warranty or representation, express or implied or arising by operation of law, including a warranty of merchantability or fitness for a particular purpose of the property, or any part thereof, and in no event shall Seller or the Auction Company be liable for any consequential damages. Conduct of the auction and increments of bidding are at the direction and discretion of the auctioneer. The Seller and Auction Company reserve the right to preclude any person from bidding if there is any question as to the person's credentials, fitness, etc. All decisions of the auctioneer are final.
NEW DATA, CORRECTIONS, AND CHANGES: Please arrive prior to scheduled auction time to inspect any changes, corrections, or additions to the property information, changes, corrections, or additions to the property information.
PERSONAL PROPERTY TERMS: A 10% buyer's premium will be added to the final bid and included in the sales price. Full settlement date of sale. Check or cash only.



REAL ESTATE TO SELL
ABSOLUTE @ 10:00 AM!
Personal Property to Sell Directly After.

270.247.3253

FOR MORE DETAILS GO TO harrisauctions.com