

LAND Auction

7950 FISHER ROAD
PRIMM SPRINGS, TN 38476

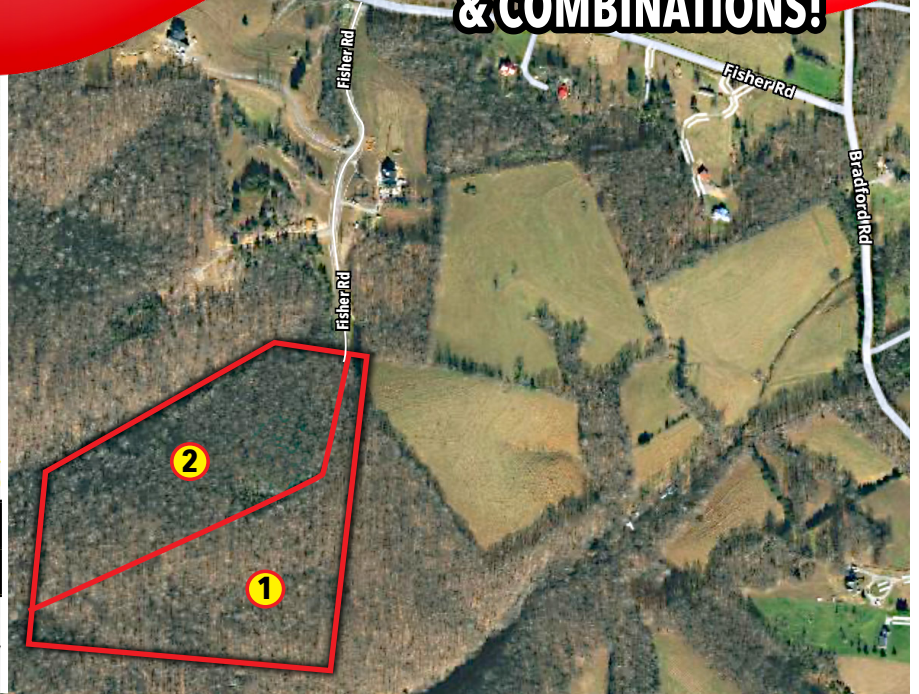
Saturday, June 17th, 2023

34±

ACRES IN 2 TRACTS & COMBINATIONS!

Williamson County
Tennessee!

@ 2:00 PM



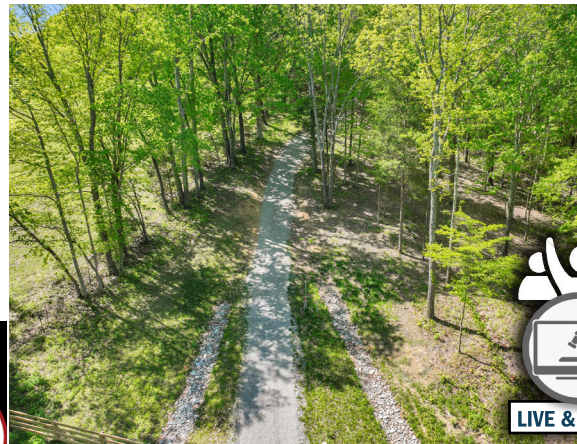
ABOUT THE REAL ESTATE:

34± very well-manicured acres, selling in 2 tracts and combinations as one. Multiple soil sites have been identified, with the ability to build several homes on either tract. Tract 1 has a recorded soil site. Tract 2 has a preliminary soil site. City water & electricity are available on the road. No timeframe to build & no restrictions on the property. The property has been meticulously groomed throughout. All the hardwood trees have been left and the underbrush has been removed. Spring fed creek at the back of the property. Numerous private building

REAL ESTATE TRACTS

Tract 1	15.54 Acres
Tract 2	19.16 Acres

sites nestled in the woods. Ideal location with easy access to I-840.



LIVE & ONLINE

REAL ESTATE TERMS: A 10% Buyer's Premium Will Be Added To The Final Bid Price & Included In Contract Price. 10% Down Day Of Auction, Balance Due In 30 Days. The property is being sold on an "AS IS, WHERE IS" basis, and no warranty or representation, either express or implied, concerning the property is made by the Seller or Auction Company. Each potential bidder is responsible for conducting his or her own independent inspections, investigations, inquiries, and due diligence concerning the property.



MICHAEL HARRIS
PRINCIPAL BROKER
PRINCIPAL AUCTIONEER
TL# 5624
TN BROKER #: 280718
270.247.3253



NICK SHUFORD
TN BROKER / PARTNER
AUCTIONEER
TN Broker for the Shuford Group
TL# 7240 | LIC #: 315937
615.579.3354

IN PARTNERSHIP WITH

Leipers Fork

CINDY GARVEY, ABR
Principal Broker/Owner
TN Lic #240640
(615) 202-9515 Mobile

HOMES

ESTATES

FARMLAND

WATERFRONT

Your Professional Auctioneers SERVING NASHVILLE AND ALL OF MIDDLE TENNESSEE

harrisauctions.com - 615.674.0535

