

Absolute **REAL ESTATE** Auction

1446 ST HWY 1213 South • Mayfield, KY 42066



SATURDAY

Oct. 21

2023

@ 10:00 am

**Over 150 Acres
of PRIME TILLABLE
LAND!**



Auction Held at The Farm!

PREVIEW DATE:

Monday, October 16th from 4-5 pm

**Lake Front Building Tracts!
High Traffic Count on Hwy. 121!
Building Tracts & Farmland!**

The Jimmy & Linda
Goatley
HOME & FARM

Fancy Farm, KY

harrisauctions.com 270.247.3253



Absolute REAL ESTATE Auction

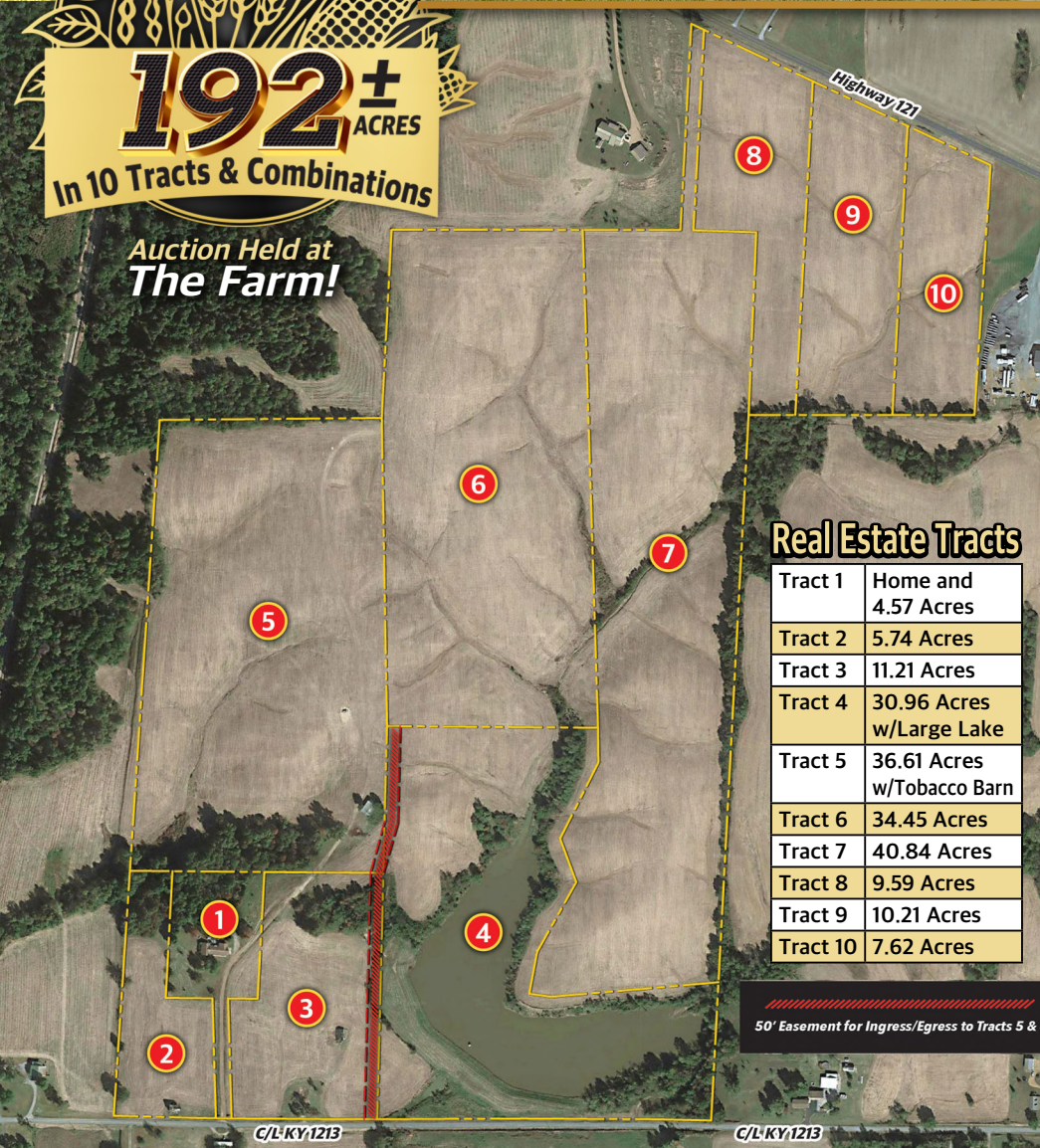
1446 ST HWY 1213 South • Mayfield, KY 42066



PREVIEW DATE:
Monday, October 16th from 4-5 pm

Fancy Farm
192+ ACRES
In 10 Tracts & Combinations

Auction Held at
The Farm!



Real Estate Tracts

Tract 1	Home and 4.57 Acres
Tract 2	5.74 Acres
Tract 3	11.21 Acres
Tract 4	30.96 Acres w/Large Lake
Tract 5	36.61 Acres w/Tobacco Barn
Tract 6	34.45 Acres
Tract 7	40.84 Acres
Tract 8	9.59 Acres
Tract 9	10.21 Acres
Tract 10	7.62 Acres

50' Easement for Ingress/Egress to Tracts 5 & 6

SATURDAY
October 21
2023
@ 10:00 am

Over 150 Acres
of **PRIME TILLABLE**
LAND!

The Jimmy & Linda
Goatley
HOME & FARM
Fancy Farm, KY



TRACT 1 DETAILS: An Entertainer's Dream Home! This 4 Bedroom, 2.5 Bath Brick Home Has Spacious Open Rooms With Open Floor Concepts. Bring Your Contractor & Designer To Customize This Home To Your Desire. Setting On Top Of The Hill The Views Are Spectacular. The Backyard Has A Great Court Yard Awaiting The New Owner Opportunity To Enjoy All Seasons Outdoors.



harrisauctions.com

TERMS AND CONDITIONS

PROCEDURE: The property will be offered in (10) ten tracts, any combination of tracts, or as a whole property. The property will be sold in the manner resulting in the highest total sale price.

BUYERS PREMIUM: A 10% Buyer's Premium will be added to the final bid and included in the deed transaction sale price.

DOWN PAYMENT: 15% as down payment on the day of the auction with balance in cash at closing on or before 30 days. The down payment may be in the form of cashier's check, personal check, or corporate check. **YOUR BIDDING IS NOT CONDITIONAL UPON FINANCING, SO BE SURE YOU HAVE ARRANGED FINANCING, IF NEEDED, AND ARE CAPABLE OF PAYING CASH AT CLOSING.**

CLOSING: Closing shall take place on or before 30 days from auction date.

REAL ESTATE TAXES: All 2023 ad valorem taxes will be prorated at closing **SURVEY:** The property will be sold by a new survey. Buyer is responsible for 50% of the cost of the survey.

DISCLAIMER AND ABSENCE OF WARRANTIES: All information contained in this brochure and all related materials is subject to the Terms and Conditions outlined in the Purchase Agreement. **ANNOUNCEMENTS MADE BY THE AUCTION COMPANY AT THE AUCTION PODIUM DURING THE TIME OF THE SALE WILL TAKE PRECEDENCE OVER ANY PREVIOUSLY PRINTED MATERIAL, OR ANY OTHER ORAL STATEMENTS MADE.** The property is being sold on an "AS IS, WHERE IS" basis, and no warranty or representation, either express or implied, concerning the property is made by the Seller or Auction Company. Each potential bidder is responsible for conducting his or her own independent inspections, investigations, inquires, and due diligence concerning the property. The information contained in this brochure is believed to be accurate but is subject to verification by all parties relying on it. No liability for its accuracy, errors, or omissions is assumed by the Seller or the Auction Company. All sketches and dimensions in this brochure are approximate. Except for any express warranties set forth in the sale documents, purchaser(s) assumes all risks thereof and acknowledges that in consideration of the other provisions contained in the sale documents, Seller and the Auction Company make no warranty or representation, express or implied or arising by operation of law, including an warranty of merchantability or fitness for a particular purpose of the property, or any part thereof, and in no event shall Seller or the Auction Company be liable for any consequential damages. Conduct of the auction and increments of bidding are at the direction and discretion of the auctioneer. The Seller and Auction Company reserve the right to preclude any person from bidding if there is any question as to the person's credentials, fitness, etc. All decisions of the auctioneer are final.

NEW DATA, CORRECTIONS, AND CHANGES: Please arrive prior to scheduled auction time to inspect any changes, corrections, or additions to the property information.