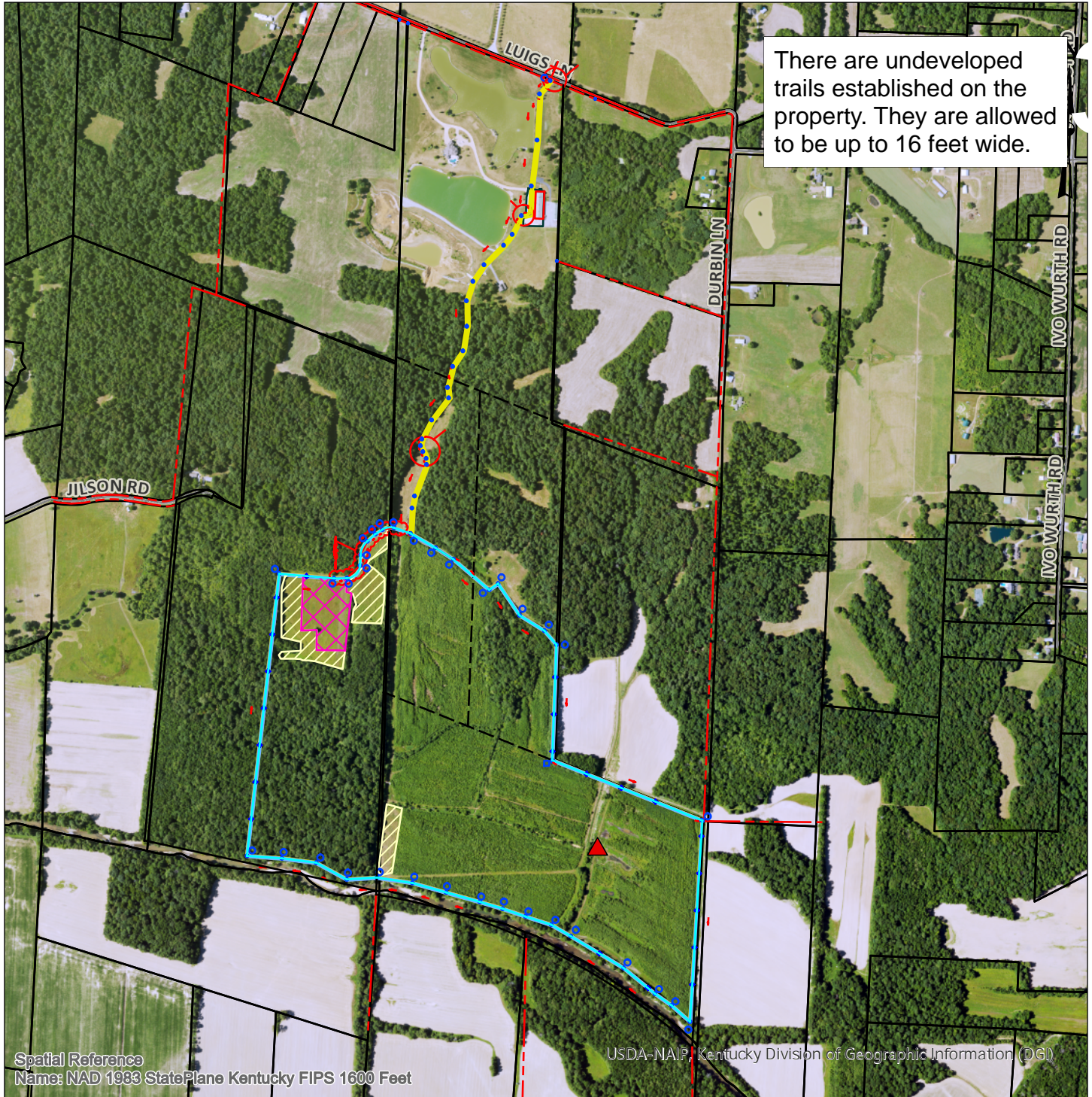


Wetland Reserve Program Map 176.13 acres within easement

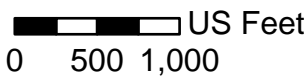
Assisted By: Brandon.Clark
McCracken County, Kentucky
MAYFIELD SERVICE CENTER
Quad: MELBER



There are undeveloped trails established on the property. They are allowed to be up to 16 feet wide.

Spatial Reference
Name: NAD 1983 StatePlane Kentucky FIPS 1600 Feet

USDA-NAIP, Kentucky Division of Geographic Information (DGI)



1 inch = 1,167 feet

Location of Map Center: 88°42'17"W 36°57'47"N



Legend

- WRP Boundary
- Easement Ingress / Egress

- Food Plots
- Flashboard Riser

- Mowing (50% yearly)