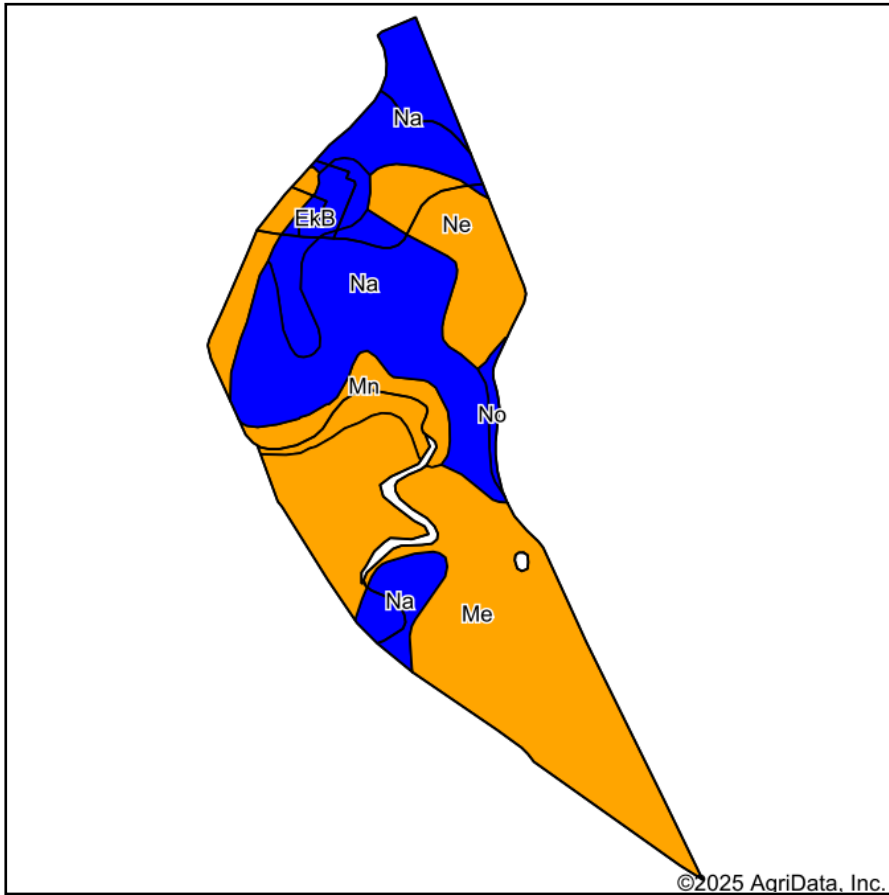
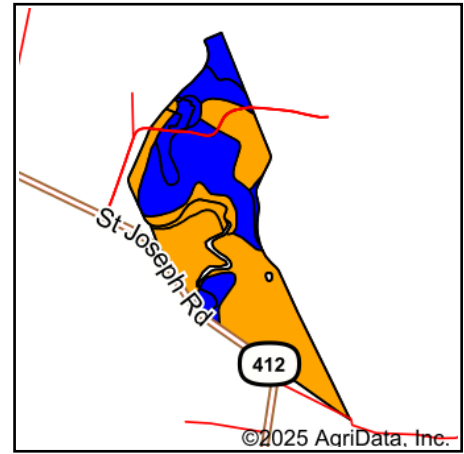


# Soils Map



Soils data provided by USDA and NRCS.



State: **Kentucky**  
 County: **Marion**  
 Location: **37° 30' 28.13, -85° 21' 19.29**  
 Township: **New Market**  
 Acres: **149.37**  
 Date: **3/6/2025**

**LANDPROZ.COM**

Maps Provided By:  
  
 CUSTOMIZED ONLINE MAPPING  
 © AgriData, Inc. 2023 [www.AgriDataInc.com](http://www.AgriDataInc.com)



Area Symbol: KY155, Soil Area Version: 22

Code	Soil Description	Acres	Percent of field	Non-Irr Class Legend	Non-Irr Class *c	Alfalfa hay Tons	Burley tobacco Lbs	Corn Bu	Grass legume hay Tons	Pasture AUM	Soybeans Bu	Winter wheat Bu	*n NCCPI Overall	*n NCCPI Corn	*n NCCPI Small Grains	*n NCCPI Soybeans
Me	Melvin silt loam, 0 to 2 percent slopes, occasionally flooded	60.38	40.3%		Illw			120	4.1	8.1	50		52	52	47	40
Na	Newark silt loam, 0 to 2 percent slopes, occasionally flooded	50.88	34.1%		Ilw	2880		149	4.7	10	65	72	74	74	58	64
Ne	Newark silt loam, 0 to 2 percent slopes, frequently flooded	15.06	10.1%		Illw	2880		149	4.7	10	65		72	72	57	63
Mn	Melvin silt loam, frequently flooded	14.27	9.6%		Illw			113	3.8	7.6	47		57	57	57	41
EkB	Elk silt loam, 2 to 6 percent slopes, rarely flooded	7.59	5.1%		Ile	6.5	3600	166	5.5	10	62	80	78	78	75	73

Soils data provided by USDA and NRCS.



Code	Soil Description	Acres	Percent of field	Non-Irr Class Legend	Non-Irr Class *c	Alfalfa hay Tons	Burley tobacco Lbs	Corn Bu	Grass legume hay Tons	Pasture AUM	Soybeans Bu	Winter wheat Bu	*n NCCPI Overall	*n NCCPI Corn	*n NCCPI Small Grains	*n NCCPI Soybeans	
No	Nolin silt loam, 0 to 2 percent slopes, frequently flooded	1.19	0.8%		Ilw		3800	175	5.5	10.5	65		78	78	67	69	
<b>Weighted Average</b>						<b>2.60</b>	<b>0.3</b>	<b>1484.6</b>	<b>134.9</b>	<b>4.4</b>	<b>9</b>	<b>57.1</b>	<b>28.6</b>	<b>*n 63.5</b>	<b>*n 63.5</b>	<b>*n 54.3</b>	<b>*n 52.5</b>

\*n: The aggregation method is "Weighted Average using all components"

\*c: Using Capabilities Class Dominant Condition Aggregation Method