

# ABSOLUTE LAND AUCTION

THURSDAY, MAY 29<sup>TH</sup> @ 6 PM

*Marie and the late Jimmy Lee  
Case Farm*

**FARM LOCATION:**

HIGHWAY 51,  
CR 1305 & CR 1306,  
BARDWELL, KY 42023

**83<sup>±</sup>**  
**ACRES**  
IN 5 TRACTS  
and  
Combinations



*Kentucky's Finest Farmland!*

**78**  
Tillable  
ACRES



Auction will be held at  
**CARLISLE COUNTY  
EXTENSION OFFICE**  
65 John Roberts Drive, Suite B,  
Bardwell, KY 42023

**HARRIS**  
Real Estate & Auction

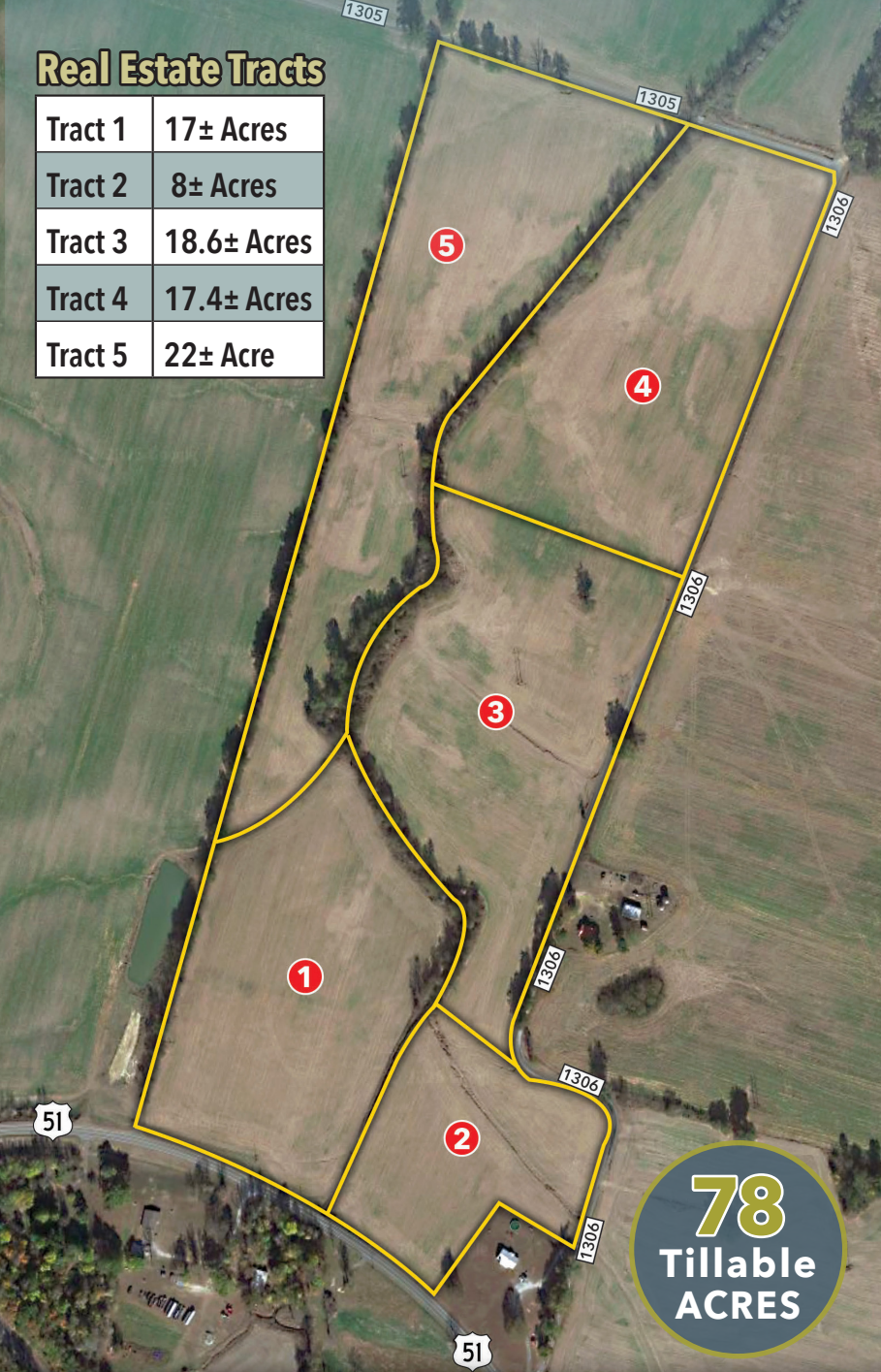
270.247.3253 | 800.380.4318

**[harrisauctions.com](http://harrisauctions.com)**



## Real Estate Tracts

Tract 1	17± Acres
Tract 2	8± Acres
Tract 3	18.6± Acres
Tract 4	17.4± Acres
Tract 5	22± Acre



# ABSOLUTE LAND AUCTION

**THURSDAY, MAY 29<sup>TH</sup> @ 6 PM**

*Marie and the late Jimmy Lee  
Case Farm*

**FARM LOCATION:**  
HIGHWAY 51,  
CR 1305 & CR 1306,  
BARDWELL, KY 42023

**83<sup>±</sup>**  
**ACRES**  
**IN 5 TRACTS**  
*and  
Combinations*

### Prime Kentucky Farmland!

Exceptional opportunity to own valuable land in Carlisle County. Located at the intersection of Highway 51, CR 1305, and CR 1306 in Bardwell, KY, this property offers incredible potential with three road frontages and is being sold in five tracts. Whether you're looking for prime tillable farmland, excellent building sites, or a wise investment, this auction has it all.

**This is your chance to secure a piece of  
Kentucky's finest farmland!**



*Kentucky's Finest Farmland!*



Auction will be held at  
**CARLISLE COUNTY  
EXTENSION OFFICE**  
65 John Roberts Drive, Suite B,  
Bardwell, KY 42023

**HARRIS**  
Real Estate & Auction

270.247.3253 | 800.380.4318

**[harrisauctions.com](http://harrisauctions.com)**