

**ABSOLUTELANDAUCTION**  
Saturday, December 20th, 2025 @ 10:00 AM

**FARM LOCATIONS:**  
PRINCETON-OLNEY ROAD &  
OLD ROAD BED OFF ARCHIE ORTT ROAD • PRINCETON, KY 42445

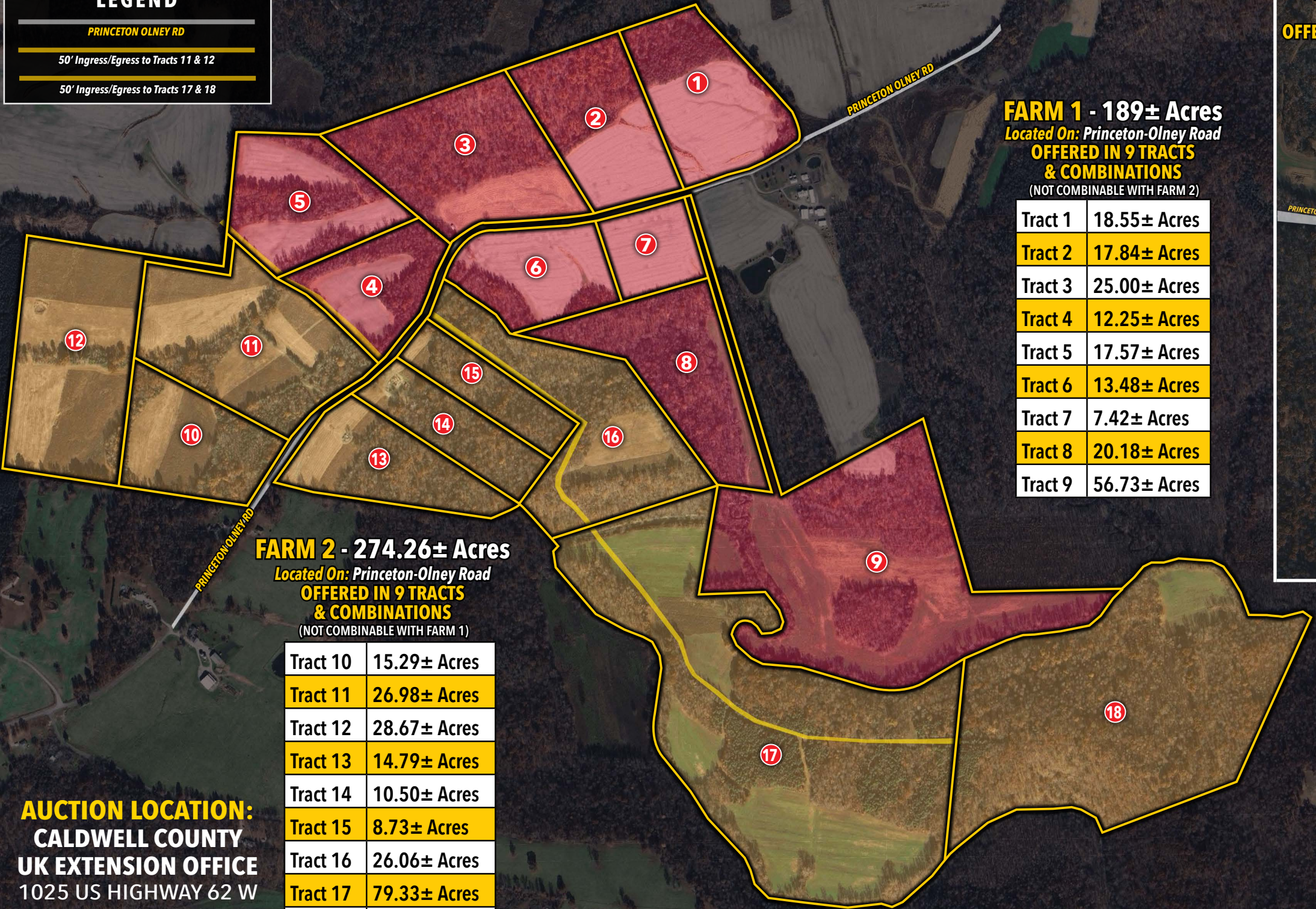
**657<sup>±</sup> ACRES** **IN 4 FARMS**  
**CALDWELL COUNTY, KY**

**LEGEND**

PRINCETON OLNEY RD

50' Ingress/Egress to Tracts 11 & 12

50' Ingress/Egress to Tracts 17 & 18



**FARM 1 - 189± Acres**  
*Located On: Princeton-Olney Road*  
**OFFERED IN 9 TRACTS & COMBINATIONS**  
(NOT COMBINABLE WITH FARM 2)

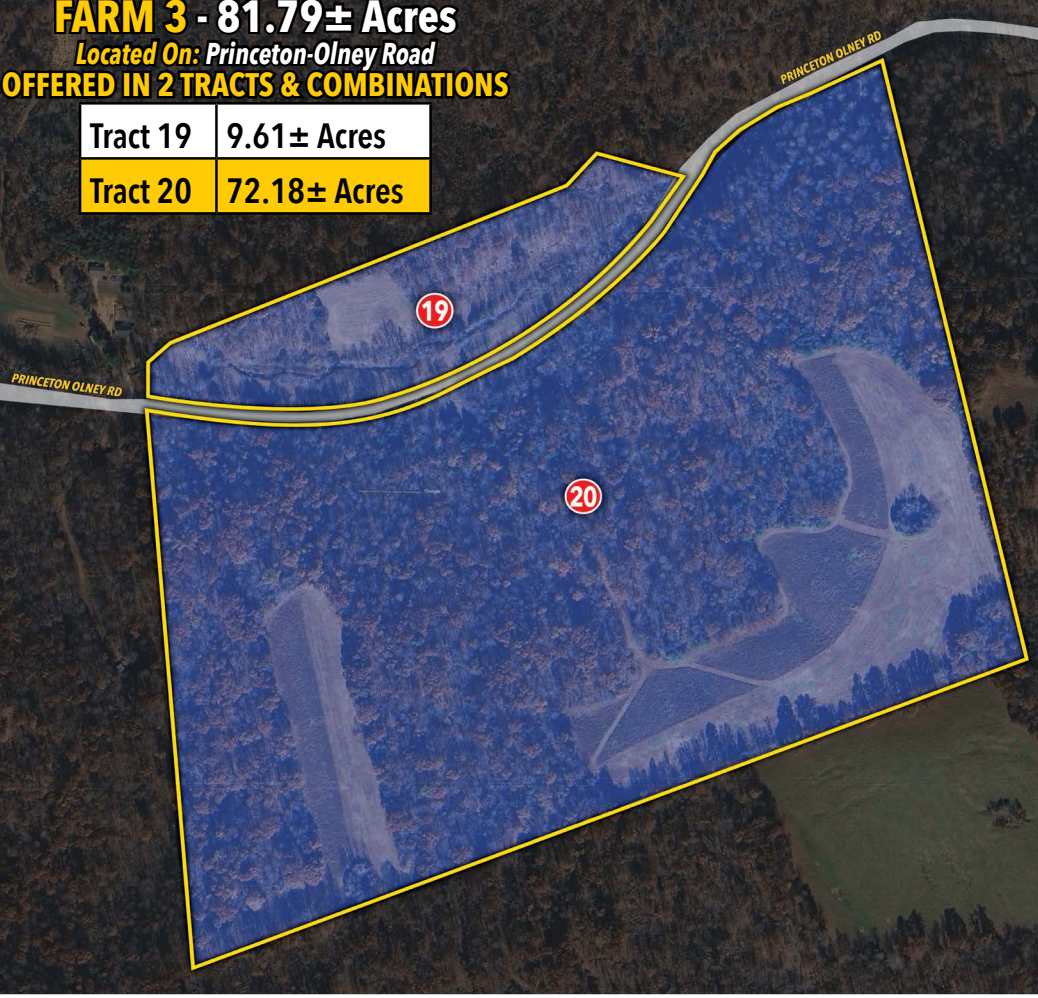
Tract 1	18.55± Acres
Tract 2	17.84± Acres
Tract 3	25.00± Acres
Tract 4	12.25± Acres
Tract 5	17.57± Acres
Tract 6	13.48± Acres
Tract 7	7.42± Acres
Tract 8	20.18± Acres
Tract 9	56.73± Acres

**FARM 2 - 274.26± Acres**  
*Located On: Princeton-Olney Road*  
**OFFERED IN 9 TRACTS & COMBINATIONS**  
(NOT COMBINABLE WITH FARM 1)

Tract 10	15.29± Acres
Tract 11	26.98± Acres
Tract 12	28.67± Acres
Tract 13	14.79± Acres
Tract 14	10.50± Acres
Tract 15	8.73± Acres
Tract 16	26.06± Acres
Tract 17	79.33± Acres
Tract 18	63.91± Acres

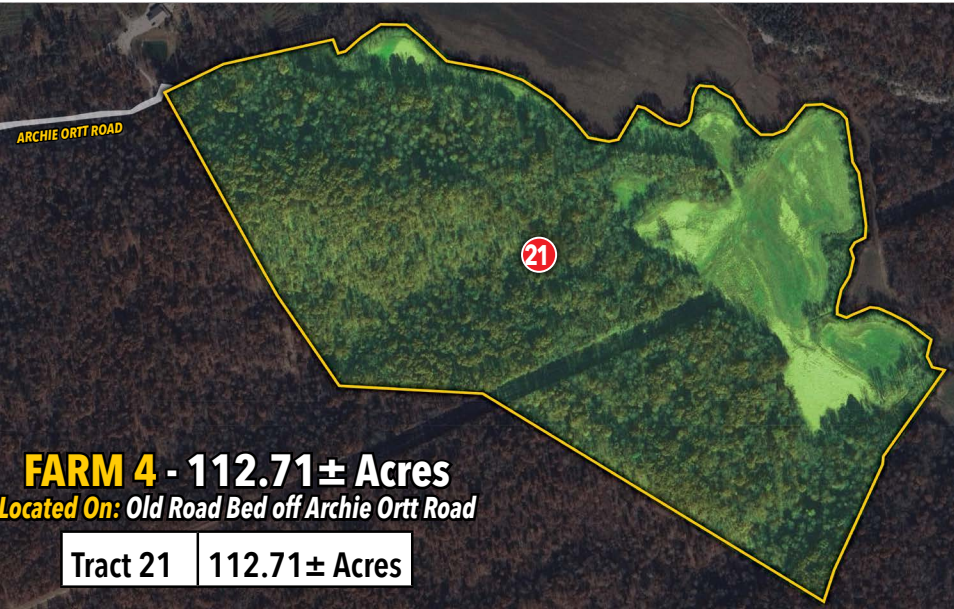
**FARM 3 - 81.79± Acres**  
*Located On: Princeton-Olney Road*  
**OFFERED IN 2 TRACTS & COMBINATIONS**

Tract 19	9.61± Acres
Tract 20	72.18± Acres



**FARM 4 - 112.71± Acres**  
*Located On: Old Road Bed off Archie Ortt Road*

Tract 21	112.71± Acres
----------	---------------



**AUCTION LOCATION:**  
**CALDWELL COUNTY**  
**UK EXTENSION OFFICE**  
1025 US HIGHWAY 62 W  
PRINCETON, KY 42445

**270.247.3253 | harrisauctions.com**

**TERMS AND CONDITIONS - PROCEDURE:** The auction shall be conducted in four distinct groups: Tracts 1-9, Tracts 9-18, Tracts 19-20 & Tract 21. **No combinations between these four groups will be permitted.** The property will be sold in the manner resulting in the highest total sale price.  
**BUYERS PREMIUM:** A 10% Buyer's Premium will be added to the final bid and included in the deed transaction sale price.  
**DOWN PAYMENT:** 15% as down payment on the day of the auction with balance in cash at closing on or before 30 days. The down payment may be in the form of cashier's check, personal check, or corporate check. **YOUR BIDDING IS NOT CONDITIONAL UPON FINANCING, SO BE SURE**

**YOU HAVE ARRANGED FINANCING, IF NEEDED, AND ARE CAPABLE OF PAYING CASH AT CLOSING.**  
**CLOSING:** Closing shall take place on or before 30 days from auction date.  
**REAL ESTATE TAXES:** All ad valorem taxes will be prorated at closing.  
**SURVEYS:** The 4 Farms will be sold by new surveys. Buyer is responsible for 50% of the cost  
**DEEDS:** Farms 1, 2, 3 sell by warranty deeds. Farm 4 sells by quit claim deed.  
**DISCLAIMER AND ABSENCE OF WARRANTIES:** All information contained in this brochure and all related materials is subject to the Terms and Conditions outlined in the Purchase Agreement. **ANNOUNCEMENTS MADE BY THE AUCTION COMPANY AT THE AUCTION PODIUM DURING THE TIME OF THE SALE WILL TAKE PRECEDENCE OVER ANY PREVIOUSLY PRINTED**

**MATERIAL, OR ANY OTHER ORAL STATEMENTS MADE.** The property is being sold on an "AS IS, WHERE IS" basis, and no warranty or representation, either express or implied, concerning the property is made by the Seller or Auction Company. Each potential bidder is responsible for conducting his or her own independent inspections investigations, inquires, and due diligence concerning the property. The information contained in this brochure is believed to be accurate but is subject to verification by all parties relying on it. No liability for its accuracy, errors, or omissions is assumed by the Seller or the Auction Company. All sketches and dimensions in this brochure are approximate. Except for any express warranties set forth in the sale documents, purchaser(s) assumes all risks thereof and acknowledges that in consideration of the other

provisions contained in the sale documents, Seller and the Auction Company make no warranty or representation, express or implied or arising by operation of law, including an warranty of merchantability or fitness for a particular purpose of the property, or any part thereof, and in no event shall Seller or the Auction Company be liable for any consequential damages. Conduct of the auction and increments of bidding are at the direction and discretion of the auctioneer. The Seller and Auction Company reserve the right to preclude any person from bidding if there is any question as to the person's credentials, fitness, etc. All decisions of the auctioneer are final.  
**NEW DATA, CORRECTIONS, AND CHANGES:** Please arrive prior to scheduled auction time to inspect any changes, corrections, or additions to the property information.

**HARRIS**  
**Real Estate & Auction**