

ABSOLUTE REAL ESTATE AUCTION

Selling the Estate of **Kenneth Ray Howard**

Thursday, May 7th, 2026 | 12:00 PM

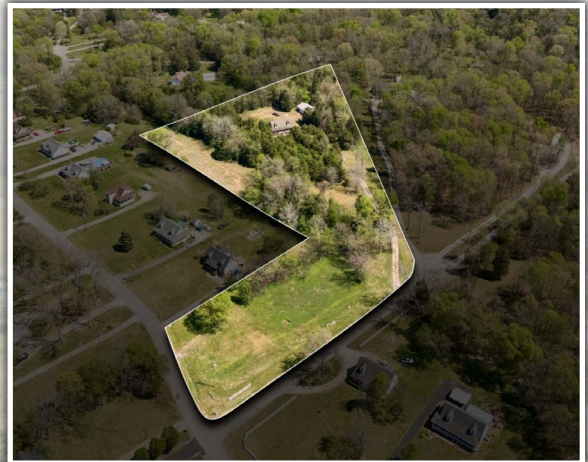


PREVIEW AUCTION DAY: Auction Day - May 7th - 10:00 - 12:00 PM

This 3-bedroom, 2-bath home situated on approximately 7± acres presents a rare opportunity to create your ideal country retreat.

Nestled among mature woods, the property offers a peaceful and private setting with exceptional potential. The home features a convenient main-level layout with all bedrooms and bathrooms located on the first floor. Upstairs, a full-length unfinished space provides a blank canvas—perfect for additional bedrooms, expanded living space, or a bonus area to significantly enhance value. While the home is in need of updates, it offers a solid foundation for improvement.

With fresh paint, new flooring, and thoughtful renovations, this property can be transformed into a truly remarkable rural escape.



harrisauctions.com • 800.380.4318 • 615.674.0535

ABSOLUTE REAL ESTATE AUCTION

Selling the Estate of **Kenneth Ray Howard**
Thursday, May 7th, 2026 | 12:00 PM



REAL ESTATE TERMS: A 10% Buyer's Premium Will Be Added To The Final Bid Price & Included In Contract Price. A 15% Deposit Is Due Day Of Auction With The Balance Due In 30 Days. The Property Is Being Sold On An "AS IS, WHERE IS" Basis, And No Warranty Or Representation, Either Express Or Implied, Concerning The Property Is Made By The Seller Or Auction Company. Each Potential Bidder Is Responsible For Conducting His Or Her Own Independent Inspections Investigations, Inquires, And Due Diligence Concerning The Property. Make Inspections Prior To Date Of Sale.

HARRIS
Real Estate & Auction



Michael Harris
PRINCIPAL BROKER
PRINCIPAL AUCTIONEER
TN Broker#: 280718
TL Lic#: 5624
Mobile: 270.970.0200



Nick Shuford
TN PARTNER
PRINCIPAL AUCTIONEER
TN Broker#: 315937
TN Lic#: 7240
Mobile: 615.579.3354



IN PARTNERSHIP WITH
PATTY DUBOIS, Realtor®
(423) 329-4541 - Lic#360098
GW **KW**
KELLER WILLIAMS
THE GILLIG GROUP REALTY

harrisauctions.com • 800.380.4318 • 615.674.0535