

ABSOLUTE REAL ESTATE AUCTION

SATURDAY, MAY 30TH, 2026 @ 10:00 AM

LOG HOME - BUILDINGS - BARN

92± ACRES

IN 4 TRACTS & COMBINATIONS

McCracken County Farm

JUST 10 MINUTES TO McCracken County High School!

HARRIS
Real Estate & Auction

1455 McKendree Church Road
Kevil, KY 42053

harrisauctions.com • 270-247-3253



PUBLIC PREVIEW:
Monday, May 18th from 5:00-6:00 pm

AUCTION HELD ON TRACT 2

ABSOLUTE REAL ESTATE AUCTION

SATURDAY, MAY 30TH, 2026 @ 10:00 AM

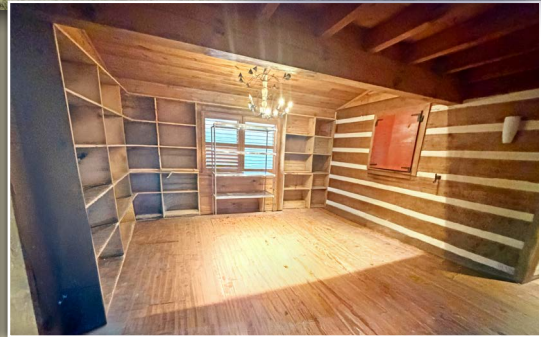


**LOG HOME
DETACHED
2 CAR GARAGE
BUILDINGS
BARN**

**92±
ACRES**

**IN 4 TRACTS
& COMBINATIONS**

PUBLIC PREVIEW: Monday, May 18th from 5:00-6:00 pm



TRACT 2 - HOME & IMPROVEMENTS (25.167± ACRES)

The centerpiece of this tract is a charming 2,300± sq ft log home that blends rustic character with everyday functionality. Offering 3 bedrooms and 3 bathrooms, the home features a spacious living area with vaulted ceilings, a wood-burning fireplace, and a screened-in front porch perfect for relaxing and taking in the surroundings. Additional highlights include walk-in closets, a dedicated office or den, a mud room and laundry room, and an open attic area providing excellent storage. Above the garage, unfinished space offers outstanding potential for a rec room, bonus area, or private retreat.

The property is further enhanced by a strong lineup of improvements designed for both residential and agricultural use. These include a 28'x30' detached 2-car garage and a 30'x40' metal shop building complete with concrete floor, electric, and a 10' overhead door. Also included are a 40'x40' metal barn and a 40'x40' tobacco barn, providing ample storage and versatility. A concrete driveway with turn-around area ensures easy access, and the property is serviced by county water, making it a well-rounded and highly functional offering.



HARRIS
Real Estate & Auction

1455 McKENDREE CHURCH ROAD • KEVIL, KY 42053

harrisauctions.com • 270-247-3253

AUCTION HELD ON TRACT 2

ABSOLUTE REAL ESTATE AUCTION

SATURDAY, MAY 30TH, 2026 @ 10:00 AM

1455 MCKENDREE CHURCH ROAD • KEVIL, KY 42053

PUBLIC PREVIEW:
Monday, May 18th from 5:00-6:00 pm

McCracken County Farm

LOG HOME - BUILDINGS - BARN
92± ACRES
IN 4 TRACTS & COMBINATIONS

REAL ESTATE TRACTS

Tract 1	20.79± Acres
Tract 2	25.16± Acres - 3 Bdrm 3 Bath Log Home - 2,113± sq ft, Detached 2 Car Garage, 30'x40' Metal Shop Building, 40'x40' Metal Build- ing, 40'x40' Tobacco Barn
Tract 3	20.42± Acres
Tract 4	25.67± Acres



Ideally situated only 10 minutes from
McCracken County High School
Kentucky Oaks Mall, and Paducah's
dining and retail amenities.

- Excellent mix of open ground and mature timber
- Ideal for: Mini farm - Hunting & recreation - Homesites - Investment potential
- Private rural setting with room to expand

HARRIS
Real Estate & Auction
harrisauctions.com
270-247-3253

Outstanding opportunity to purchase 92± acres in McCracken County offered in 4 tracts & combinations! This diverse property features a beautiful log home, multiple shops and barns, and a strong mix of open farmland and wooded acreage—perfect for residential, recreational, or agricultural use. Enjoy the privacy of a rural setting while being just minutes from shopping, restaurants, and conveniences in the Paducah area. Whether you're looking for a country home, mini farm, hunting property, or investment, this offering provides flexibility to buy individual tracts, combinations, or the entire property.

ABSOLUTE REAL ESTATE AUCTION

Selling to the Highest Bidder - No Reserve

Saturday, May 30th at 10:00 am

1455 McKendree Church Road • Kevil, KY 42053

PUBLIC PREVIEW:

Monday, May 18th from 5:00-6:00 pm

McCracken
County Farm

JUST 10 MINUTES TO
McCRACKEN COUNTY HIGH SCHOOL

LOG HOME - BUILDINGS - BARN

92± ACRES

IN 4 TRACTS & COMBINATIONS

HARRIS

Real Estate & Auction

HOMES | FARMLAND
ESTATES | WATERFRONT



MICHAEL DALE HARRIS

PRINCIPAL BROKER / AUCTIONEER

IL# 441.001142 | IL Broker# 475.204410

270.247.3253



270-247-3253 / 800-380-4318 / harrisauctions.com

REAL ESTATE TERMS & CONDITIONS

FOR FULL TERMS - Go to - harrisauctions.com

The property will be offered in 4 individual tracts, any combination of tracts, or as a whole property. The property will be sold in the manner resulting in the highest total sale price. A 10% Buyer's Premium will be added to the final bid and included in the deed transaction sale price. 15% as down payment on the day of the auction with balance in cash at closing on or before 30 days. The down payment may be in the form of cashier's check, personal check, or corporate check. YOUR BIDDING IS NOT CONDITIONAL UPON FINANCING, SO BE SURE YOU HAVE ARRANGED FINANCING, IF NEEDED, AND ARE CAPABLE OF PAYING CASH AT CLOSING. Closing shall take place on or before 30 days from auction date. All 2026 ad valorem taxes will be prorated at closing. The property will be sold by a new survey. Buyer is responsible for 50% of the cost.

Harris Real Estate & Auction

3855 State Route 45 North

Mayfield, KY 42066

FIRST CLASS MAIL
PRESORT
U.S. POSTAGE
PAID
MAYFIELD, KY 42066
PERMIT NO. 25